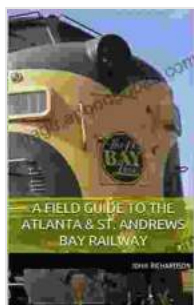


Field Guide to the Atlanta & St. Andrews Bay Railway: Unraveling the History and Impact of a Florida Railroad Pioneer

In the annals of Florida's transportation history, the Atlanta & St. Andrews Bay Railway stands as a pivotal force, forging connections between communities, shaping industries, and leaving an indelible mark on the state's economic and cultural landscape. This comprehensive field guide invites you on a captivating journey through the railway's rich past, from its humble beginnings in 1888 to its final chapter in 1972.



A Field Guide to the Atlanta & St. Andrews Bay Railway

by Mary Hertel

★★★★★ 5 out of 5

Language : English
File size : 11974 KB
Text-to-Speech : Enabled
Screen Reader : Supported
Enhanced typesetting : Enabled
Print length : 147 pages



The Genesis of a Railroad Empire

The Atlanta & St. Andrews Bay Railway (A&SAB) emerged amidst the post-Civil War industrial expansion in the South. In 1888, a group of shrewd investors, led by Henry Plant, envisioned a railroad that would connect the bustling city of Atlanta, Georgia, with the promising port of St. Andrews Bay, Florida. The nascent railway's goal was to facilitate the movement of goods

and passengers between the rapidly growing cities of the Southeast and the burgeoning markets of the Gulf Coast.

A Lifeline for Dothan and Beyond

As the A&SAB extended its tracks southward, it became an economic lifeline for the small town of Dothan, Alabama. Founded in 1885 as a whistle stop, Dothan blossomed into a major transportation and industrial hub thanks to the railway's presence. The A&SAB provided essential access to markets for local farmers, businesses, and manufacturers, fueling Dothan's growth and prosperity.

Conquering the Terrain to Panama City

Undeterred by the challenging terrain, the A&SAB pushed its rails onward, reaching Panama City, Florida, in 1895. This feat of engineering opened up new avenues for commerce and tourism between the Gulf Coast and the interior of Florida. The railway transported vital supplies and commodities, while also carrying vacationers seeking the sun-kissed beaches and serene shores of Panama City.

The Rise and Fall of the Logging Industry

The A&SAB played a pivotal role in the logging industry, hauling vast quantities of timber from the vast forests of the Florida Panhandle. The railway's presence facilitated the growth of numerous sawmills and logging towns along its route. However, the decline of the logging industry in the mid-20th century dealt a significant blow to the A&SAB's revenue stream.

Tourism and the Scenic Land Bridge

As the logging industry waned, the A&SAB sought to reinvent itself as a tourist destination. In the 1940s, the railway introduced the "Scenic Land Bridge," a unique rail journey that showcased the diverse landscapes of Florida, from the rolling hills of Georgia to the sugar-white sands of the Gulf Coast. The Land Bridge became a popular attraction, attracting visitors from far and wide to experience the beauty of the Sunshine State from a unique vantage point.

The Sunset Years and Legacy

The A&SAB faced increasing competition from automobiles and trucks in the post-World War II era. Despite efforts to diversify its operations and modernize its equipment, the railway could not overcome the challenges of rising costs and declining ridership. In 1972, the A&SAB ceased operations, leaving behind a rich legacy of service to Florida communities.

Exploring the A&SAB Today

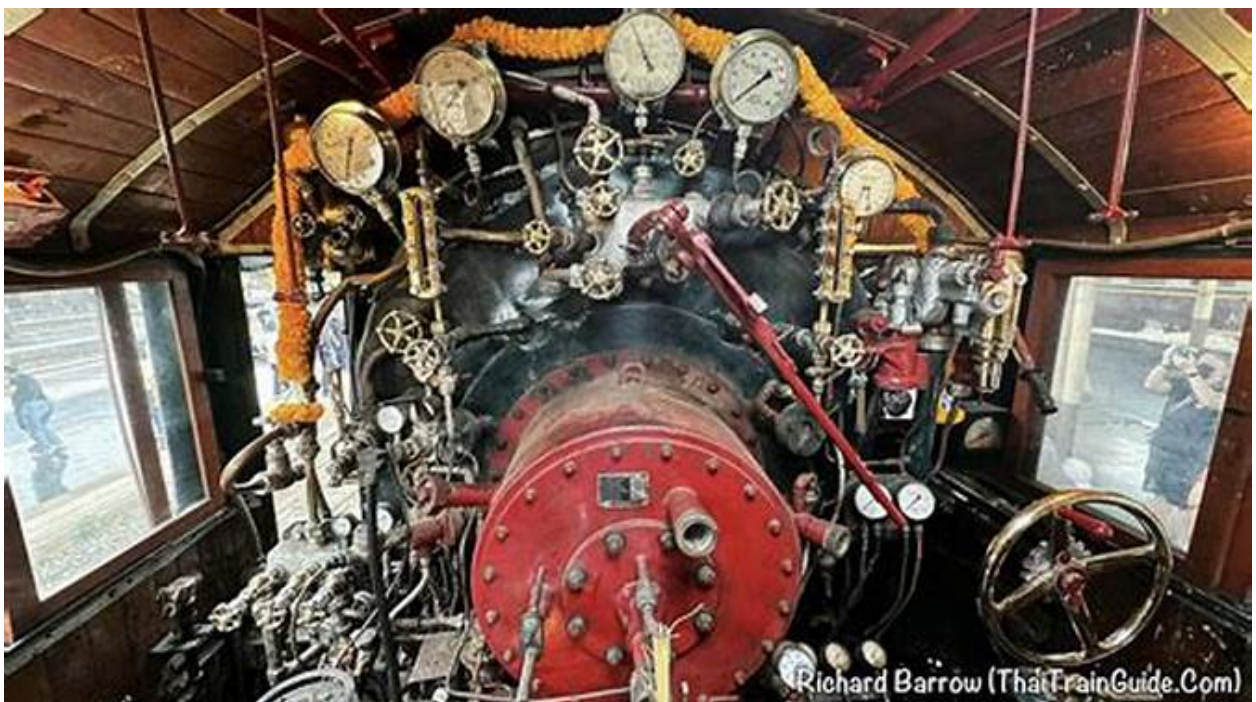
Although the A&SAB's trains no longer traverse the rails, its legacy continues to be celebrated through historic landmarks, museums, and dedicated preservation efforts. Visitors can explore the former railway depot in Dothan, Alabama, now a museum showcasing the A&SAB's history and impact on the city. In Panama City, Florida, the A&SAB's original train station has been transformed into an art gallery, preserving the building's architectural heritage.

The Field Guide to the Atlanta & St. Andrews Bay Railway is an indispensable resource for anyone interested in the fascinating history and enduring legacy of this Florida railroad icon. Through meticulously researched text and captivating imagery, this comprehensive guide invites readers to embark on a journey through time, uncovering the pivotal role

the A&SAB played in shaping the economic, social, and cultural landscape of the Sunshine State.

So, step aboard and experience the rich tapestry of the Atlanta & St. Andrews Bay Railway – a tale of innovation, perseverance, and the transformative power of transportation in the annals of Florida's history.

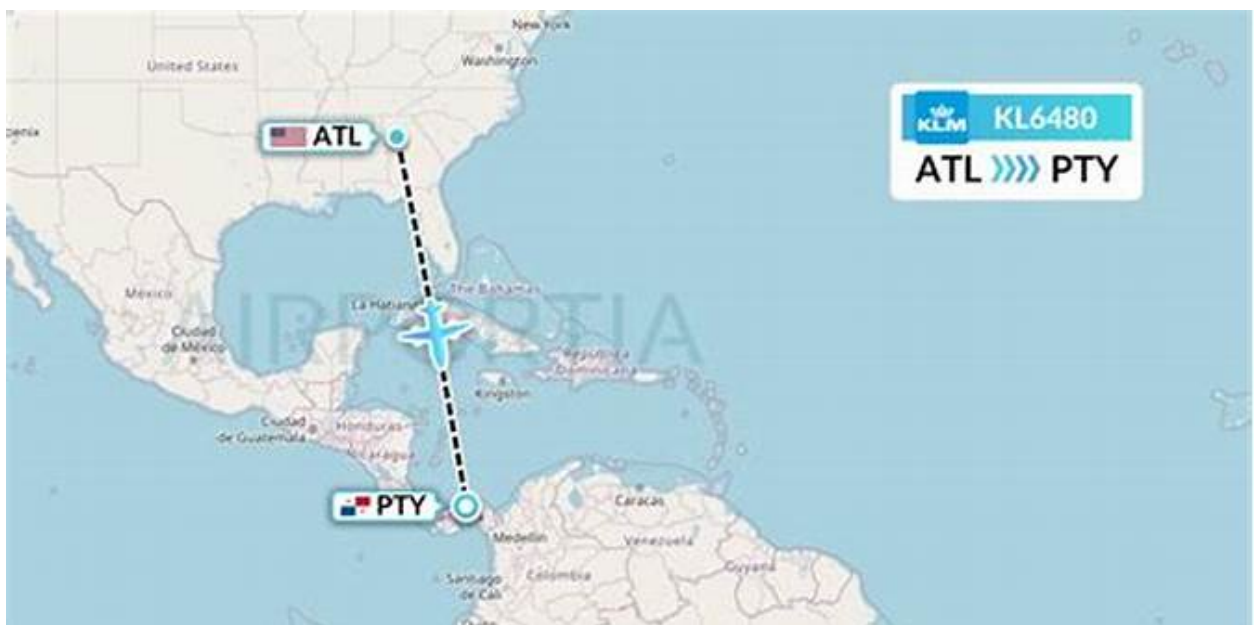
Image Gallery



- A&SAB locomotive on display at the Dothan museum



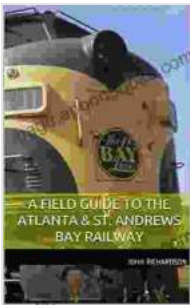
- Original A&SAB train station in Panama City, now an art gallery



- Map showcasing the A&SAB's route from Atlanta to Panama City

References

1. Bryan, W. C. (1972). A History of the Atlanta & St. Andrews Bay Railway. Dothan, AL: Wiregrass Press.
2. Brooks, H. K. (1987). The Atlanta & St. Andrews Bay Railway: A Century of Service to Florida. Panama City, FL: Bay County Historical Society.
3. Dothan Area Chamber of Commerce. (n.d.). A&SAB History. Retrieved from <https://www.dothan.org/dothan-history/>



A Field Guide to the Atlanta & St. Andrews Bay Railway

by Mary Hertel

★★★★★ 5 out of 5

Language : English
File size : 11974 KB
Text-to-Speech : Enabled
Screen Reader : Supported
Enhanced typesetting : Enabled
Print length : 147 pages

FREE

DOWNLOAD E-BOOK





Journey into the Verdant Realm of "Plants vs. Zombies: Timepocalypse" by Paul Tobin

Immerse Yourself in an Epic Battle for Survival Prepare yourself for an exhilarating adventure as you delve into the pages of "Plants vs. Zombies: Timepocalypse," a...



Unveiling the Allure of Modish Crochet Hats Annie Crochet: A Journey into the Realm of Style and Creativity

In the realm of fashion and creativity, the art of crocheting unravels a world of endless possibilities. Among the captivating creations that emerge from the...